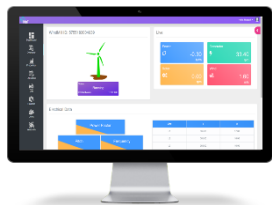


## Interfaces



WMW

Windmill Watcher



#13 6<sup>th</sup> Street PSG GRD  
Bhavan Vilankurichi road  
Coimbatore 641004

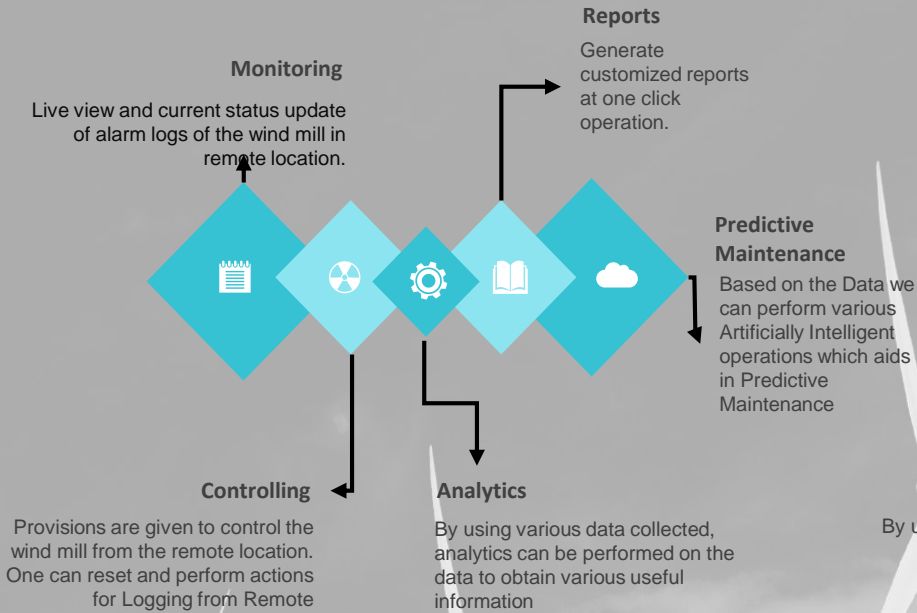


+91 94433 88004



hello@katomaran.com

## WMW Features



## Software

WMW Mobile and WMW Web Application form the software part that makes use of the server and process data

## Hardware

Hardware part mainly includes SMPS Power Supply Module, MCB for over current protection and WMW core IoT Hardware Module

## WMW Overview

WMW is an IoT(Internet of Things) based product to introduce connectivity among windmills in windfarms. The aim of the product is to establish the last mile connectivity between a user and windmill located in any remote location. This product enables the user to monitor and control the wind mill through WMW Mobile and Web.

## WMW Benefits

